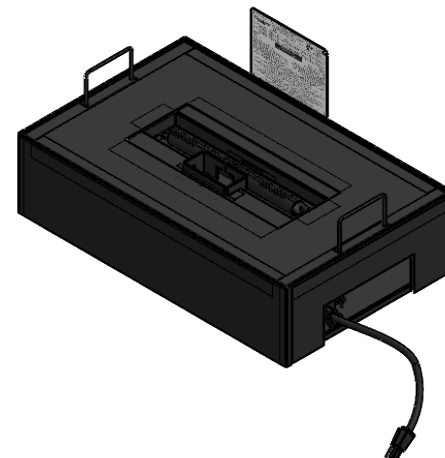


2

1

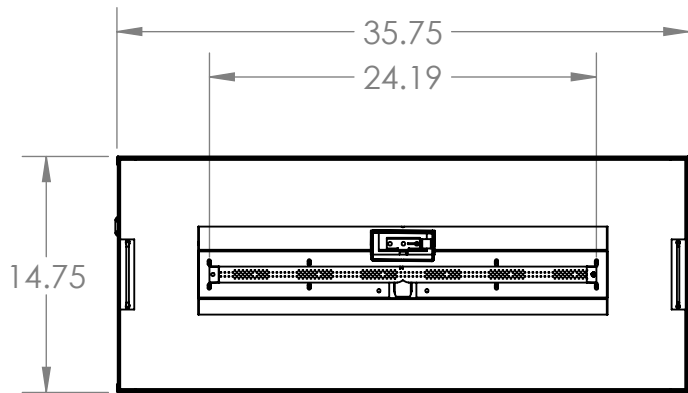
|                    |                                    |               |                  |
|--------------------|------------------------------------|---------------|------------------|
| POWER REQUIREMENTS | VOLTS                              |               | AC 120 v @ 60Hz  |
|                    | BATTERY BACKUP                     |               | 4+ aa BATTERY 6v |
| LAMPS              | LED 5v RGB                         |               | WS2811 DIODES    |
|                    | IR REMOTE CONTROLLER               |               |                  |
|                    | CUSTOMIZABLE WIFI APP              |               |                  |
| PROFLAME II SYSTEM | 5 LEVELS OF FLAME INTENSITY        |               |                  |
|                    | REMOTE CONTROLLED IGNITION         |               |                  |
|                    | VENTFREE OR VENTLESS CONFIGURATION |               |                  |
|                    | OXYGEN DEPLETION SENSOR            |               |                  |
| HEATING OUTPUT     | MAXIMUM HEAT                       | 32,000 BTU/hr | 9.38 kW          |
|                    | MINIMUM HEAT (EN)                  | 20,000 BTU/hr | 5.86 kW          |
|                    | MINIMUM HEAT (EP)                  | 16,000 BTU/hr | 4.68 kW          |

NOTE:  
EN- NATURAL GAS  
EP- PROPANE



B

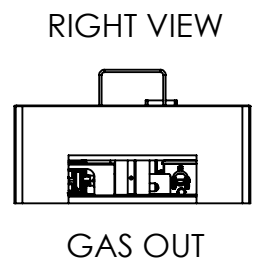
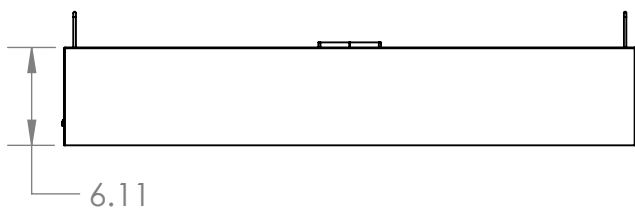
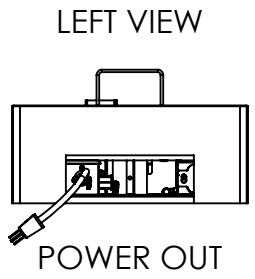
B



| MINIMUM FIRE BOX DIM. (INCHES) |       |        |
|--------------------------------|-------|--------|
| WIDTH                          | DEPTH | HEIGHT |
| 36                             | 15    | 20     |

A

A



**GRAND CANYON GAS LOGS**

TITLE:  
VENTFREE, LINEAR DROP IN BRNR  
VFLDB36L-EP  
VFLDB36L-EN

|          |              |     |
|----------|--------------|-----|
| SIZE     | DWG. NO.     | REV |
| <b>A</b> | VFLDB-36L-XX | A   |

SCALE: N/A WEIGHT: SHEET 1 OF 1

2

1