

GRAND GAS CANYON LOGS

PRICE GUIDE 2026

Shown:
GFWOC-24 Log Set
on 24" Lava Burner



PRICE GUIDE EFFECTIVE MARCH 1, 2026

Lava Vented Front View featuring GlowFire™ Log Technology

This one-of-a-kind masterpiece gives the look and the feel of the log on fire; because it is! Each Glowfire™ log is individually orificed and ported allowing the fuel to flow out of the log presenting the most realistic gas log set on the market.



GRAND CANYON GAS LOGS

Our expertly crafted, ultra-realistic gas logs and larger than life flames are designed to elevate any indoor or outdoor environment, creating an unforgettable ambiance reminiscent of gathering around the campfire. Make your hearth the centerpiece of your home with Grand Canyon Gas Logs.

Established in 2014, Grand Canyon Gas Logs was created to bring handcrafted quality, hyper-realistic designs, and American-made

manufacturing back to the hearth industry's gas log market – employing over 30 years of industry knowledge to foster innovation in an ever-evolving landscape. Earning the brand a highly-regarded reputation for their boutique practices and positioning Grand Canyon as the “craft beer” of the gas log industry.

Take a look at our full line of indoor and outdoor products to truly understand the Grand Canyon Gas Logs difference.



WEBSITE



LAVA BURNER



BEDROCK



OUTDOOR



VENTED



VENT LESS



BURNERS



CONTEMPORARY

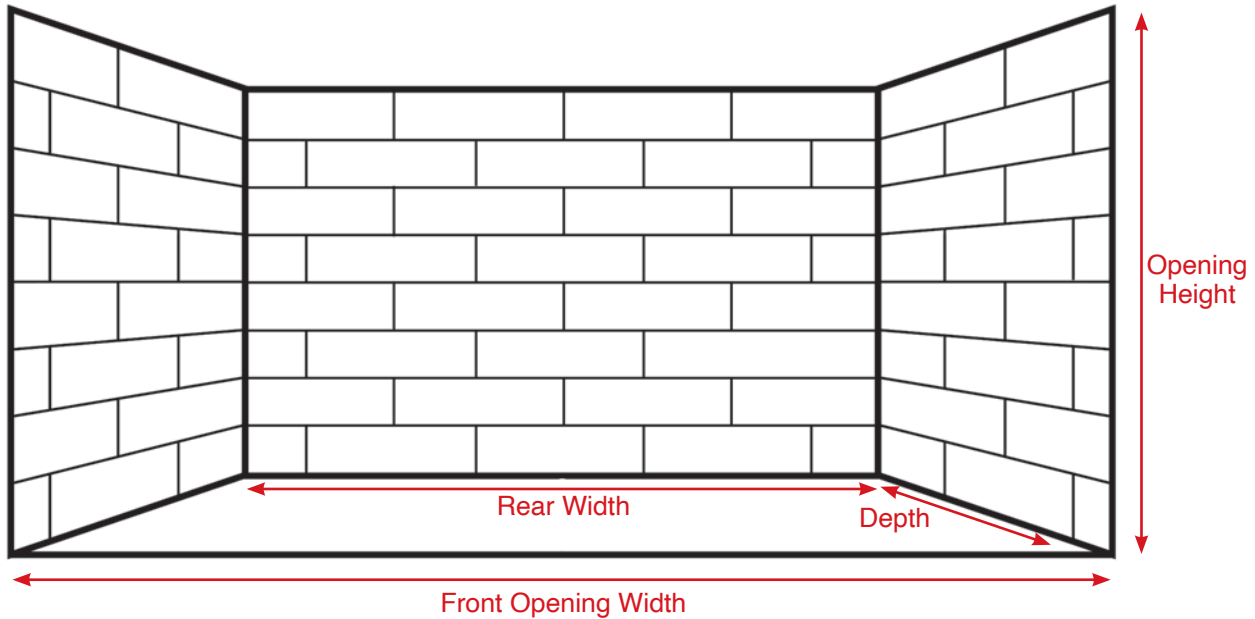
TABLE OF CONTENTS

Select your Size, Log, Burner, Controls, and Accessories	1
Minimum Fireplace Dimensions	2/3
Lava Burner w/ GlowFire™ Log Technology	4
Bedrock Series	5
Indoor/Outdoor Vented Log Sets and Burners	6
Vented Assembled Burner Systems	7
See Through Logs, Burners, and Assembled Burners	8/9
Jumbo/Jumbo Slimline Log Sets and Burners	10
Vented Contemporary, Cannonballs	11
Controls, Twigs, and Accessories, Glass	12/13
Controls and Accessories; Indoor and Outdoor	14
Ventless Log Sets and Burners	15
Outdoor Fire Pit Kits	16
Outdoor Fire Pit Kits and Fire Pit Logs	17
Outdoor Fire Products and Accessories	18
Fire Tables	19
Fire Bowls	20
Kiva Sets and Point of Purchase Displays	21
Replacement Parts	22/23

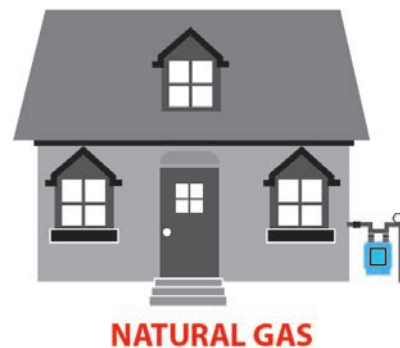
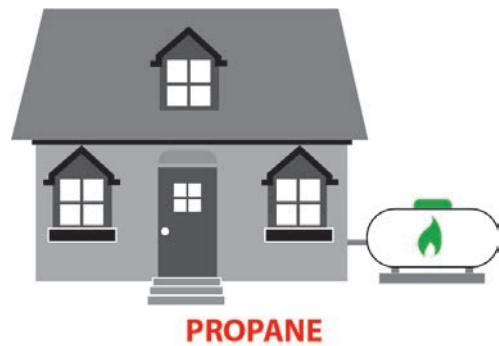


SELECT YOUR...


Size, Log, Burner, Controls, and Accessories.





Measure front width, rear width, height and depth of empty fire box.
Refer to sizing chart on the next pages.





MINIMUM FIREPLACE DIMENSIONS


Lava Burner 	MINIMUM FIREPLACE SIZES									
	SIZE	FRONT WIDTH	DEPTH	BACK WIDTH	HEIGHT	BTU RATING NG		BTU RATING LP		
						HIGH	LOW	HIGH	LOW	
18"	28"	16"	18"	22"	40k	25k	40k	18k		
24"	34"	16"	24"	22"	55k	35k	55k	30k		
30"	40"	18"	30"	26"	75k	45k	75k	40k		
36"	46"	18"	36"	26"	85k	55k	85k	48k		

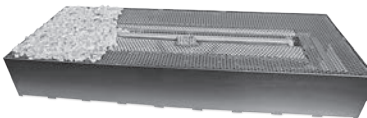
2-Burner with controls (Match Lite, SPQMKN/LP, MVQMKN/LP, MMVKR-NG/LP, EIS-N/L) 	MINIMUM FIREPLACE SIZES								
	SIZE	FRONT WIDTH	DEPTH	BACK WIDTH	HEIGHT	BTU RATING NG		BTU RATING LP	
	18"	30"	14"	18"	14"	52k		49k	
21"	33"	14"	21"	14"	58k		58k		
24"	36"	14"	24"	14"	64k		64k		
30"	42"	16"	30"	14"	76k		79k		
36"	48"	16"	36"	14"	81k		83k		
42"	54"	16"	42"	14"	86k		87k		
48"	60"	16"	48"	16"	150k		145k		
60"	72"	16"	60"	16"	175k		165k		

2-Burner with controls (MVKEIKN/LP) 	MINIMUM FIREPLACE SIZES								
	SIZE	FRONT WIDTH	DEPTH	BACK WIDTH	HEIGHT	BTU RATING NG		BTU RATING LP	
	18"	36"	14"	24"	14"	52k		49k	
21"	39"	14"	27"	14"	58k		58k		
24"	42"	14"	30"	14"	64k		64k		
30"	48"	16"	36"	14"	76k		79k		
36"	54"	16"	42"	14"	81k		83k		
42"	60"	16"	48"	14"	86k		87k		

3-Burner with controls (Match Lite, SPQMKN/LP, MVQMKN/LP, MMVKR-NG/LP, MVKEIKN/LP, EIS-N/L) 	MINIMUM FIREPLACE SIZES								
	SIZE	FRONT WIDTH	DEPTH	BACK WIDTH	HEIGHT	BTU RATING NG		BTU RATING LP	
	18"	30"	14"	18"	16"	46k		41k	
21"	33"	14"	21"	16"	58k		58k		
24"	36"	14"	24"	16"	74k		64k		
30"	42"	16"	30"	16"	102k		91k		
36"	48"	16"	36"	16"	111k		106k		
42"	54"	16"	42"	16"	120k		121k		

Jumbo Slimline-Burner with controls (Match Lite, HCSPQMKN/LP, HCMVQMKN/LP, MMVKR-NG/LP, MVKEIKN/LP, EIS-N/L) 	MINIMUM FIREPLACE SIZES								
	SIZE	FRONT WIDTH	DEPTH	BACK WIDTH	HEIGHT	BTU RATING NG		BTU RATING LP	
	24"	36"	21"	24"	30"	103k		95k	
30"	42"	21"	30"	30"	112k		110k		
36"	48"	21"	36"	30"	150k		145k		
42"	54"	21"	42"	30"	165k		160k		
48"	60"	21"	48"	30"	195k		190k		
60"	72"	21"	60"	30"	230k		225k		

Jumbo-Burner with controls (Match Lite, HCSPQMKN/LP, HCMVQMKN/LP, EIS-N/LP) 	MINIMUM FIREPLACE SIZES								
	SIZE	FRONT WIDTH	DEPTH	BACK WIDTH	HEIGHT	BTU RATING NG		BTU RATING LP	
	36"	48"	24"	36"	30"	150k		145k	
42"	54"	24"	42"	30"	165k		160k		
48"	60"	24"	48"	30"	195k		190k		
60"	72"	24"	60"	30"	230k		225k		
72"	84"	24"	72"	30"	240k		230k		
84"	96"	24"	84"	30"	270k		240k		
96"	108"	24"	96"	30"	300k		275k		
108"	120"	24"	108"	30"	350k		325k		
120"	132"	24"	120"	30"	500k		450k		

Bedrock Vented Linear Drop-in Burner 	MINIMUM FIREPLACE SIZES								
	SIZE	FRONT WIDTH	DEPTH	BACK WIDTH	HEIGHT	BTU RATING NG		BTU RATING LP	
	24"	24"	15"	24"	20"	30k/20k		30k/15k	
36"	36"	15"	36"	20"	45k/30k		45k/20k		
48"	48"	15"	48"	20"	60k/40k		60k/30k		
60"	60"	15"	60"	20"	75k/50k		75k/40k		
72"	72"	15"	72"	20"	90k/60k		90k/50k		
84"	84"	15"	84"	20"	105k/70k		105k/55k		
96"	96"	15"	96"	20"	120k/80k		120k/60k		



Price Guide effective July 7, 2025

MINIMUM FIREPLACE DIMENSIONS

KIVA-Burner with controls (Match Lite, SPQMKN/LP, MVQMKN/LP, MMVKR-NG/LP, MVKEIKN/LP, EIS-N/L)	MINIMUM FIREPLACE SIZES						
	SIZE	FRONT WIDTH	DEPTH	BACK WIDTH	HEIGHT	BTU RATING NG	BTU RATING LP



18"	24"	12"	12"	18"	45k	35k
24"	30"	12"	18"	18"	52k	49k
30"	35"	12"	21"	18"	65k	64k

Glass H-Burner with controls (Match Lite, SPQMKN/LP, MVQMKN/LP, MMVKR-NG/LP, EIS-N/L)	MINIMUM FIREPLACE SIZES						
	SIZE	FRONT WIDTH	DEPTH	BACK WIDTH	HEIGHT	BTU RATING NG	BTU RATING LP



18"	30"	14"	18"	10"	52k	49k
21"	33"	14"	21"	10"	58k	58k
24"	36"	14"	24"	10"	64k	64k
30"	42"	16"	30"	10"	76k	79k
36"	48"	16"	36"	10"	81k	83k
42"	54"	16"	42"	10"	86k	87k
48"	60"	16"	48"	10"	150k	145k
60"	72"	16"	60"	10"	175k	165k

Glass H-Burner with controls (MVKEI/LP)	MINIMUM FIREPLACE SIZES						
	SIZE	FRONT WIDTH	DEPTH	BACK WIDTH	HEIGHT	BTU RATING NG	BTU RATING LP



18"	36"	14"	24"	10"	52k	49k
21"	39"	14"	27"	10"	58k	58k
24"	42"	14"	30"	10"	64k	64k
30"	48"	16"	36"	10"	76k	79k
36"	54"	16"	42"	10"	81k	83k
42"	60"	16"	48"	10"	86k	87k

2-Burner See Through with controls (Match Lite, HCSPQMKN/LP, HCMVQMKN/LP, MMVKR-NG/LP, EIS-N/L)	MINIMUM FIREPLACE SIZES						
	SIZE	FRONT WIDTH	DEPTH	BACK WIDTH	HEIGHT	BTU RATING NG	BTU RATING LP



18"	30"	14"	30"	14"	103k	93k
24"	36"	14"	36"	14"	118k	100k
30"	42"	16"	42"	14"	128k	115k
36"	48"	16"	48"	14"	135k	125k
42"	54"	16"	54"	14"	140k	130k
48"	60"	16"	60"	16"	150k	145k
60"	72"	16"	72"	16"	175k	165k

2-Burner See Through with controls (MVKEIKN/LP)	MINIMUM FIREPLACE SIZES						
	SIZE	FRONT WIDTH	DEPTH	BACK WIDTH	HEIGHT	BTU RATING NG	BTU RATING LP



18"	36"	14"	36"	14"	103k	93k
24"	42"	14"	42"	14"	118k	100k
30"	48"	16"	48"	14"	—	115k
36"	54"	16"	54"	14"	—	125k
42"	60"	16"	60"	14"	—	130k

3-Burner See Through with controls (Match Lite, HCSPQMKN/LP, HCMVQMKN/LP, MMVKR-NG/LP, MVKEIKN/LP, EIS-N/L)	MINIMUM FIREPLACE SIZES						
	SIZE	FRONT WIDTH	DEPTH	BACK WIDTH	HEIGHT	BTU RATING NG	BTU RATING LP



18"	30"	14"	30"	16"	103k	93k
24"	36"	14"	36"	16"	118k	100k
30"	42"	16"	42"	16"	128k	115k
36"	48"	16"	48"	16"	135k	125k
42"	54"	16"	54"	16"	140k	130k

Jumbo-Burner See Through with controls (Match Lite, HCSPQMKN/LP, HCMVQMKN/LP, MMVKR-NG/LP, MVKEIKN/LP, EIS-N/L)	MINIMUM FIREPLACE SIZES						
	SIZE	FRONT WIDTH	DEPTH	BACK WIDTH	HEIGHT	BTU RATING NG	BTU RATING LP



24"	36"	26"	36"	30"	103k	95k
30"	42"	26"	42"	30"	112k	110k
36"	48"	26"	48"	30"	165k	155k
42"	54"	26"	54"	30"	185k	170k
48"	60"	26"	60"	30"	210k	195k
60"	72"	26"	72"	30"	250k	235k



Price Guide effective July 7, 2025

customerservice@grandcanyonlogs.com • (602) 344-4217 • grandcanyonlogs.com

LAVA SERIES



36" Lava Burner Glowfire Log Technology Arizona Weathered Oak Charred

GlowFire™ Log AWOC 36" Lava Burner

LAVA VENTED FRONT VIEW BURNER - This one-of-a-kind masterpiece gives the look and the feel of the log on fire; because it is! Each log is individually orificed and ported allowing the fuel to flow out of the log presenting the most realistic gas log set on the market. The revolutionary technology present ultra-realistic style and design to the traditional gas log set. GlowFire™ Log Technology also allows for increased efficiency by using less BTU's and creating a fuller more robust flame effect. The ceramic refractory logs radiate more heat out into the room compared to a traditional concrete gas log set. Available in 4 convenient sizes, gas specific construction, and available with either On/Off or variable flame electronic controls. The Lava Burner series and GlowFire™ Log Technology has created a platform for endless log style and future configuration development.

LAVA VENTED FRONT VIEW BURNER		MODEL#	18"	24"	30"	36"
NEW	LAVA FRONT VIEW NATURAL GAS ELECTRONIC IGNITION BURNER (EN)	LAFV-##-EN	\$1668	\$1736	\$1812	\$2034
NEW	LAVA FRONT VIEW PROPANE ELECTRONIC IGNITION BURNER (EP)	LAFV-##-EP	\$1668	\$1736	\$1812	\$2034
NEW	LAVA FRONT VIEW NATURAL GAS VARIABLE ELECTRONIC IGNITION BURNER (VEN)	LAFV-##-VEN	\$2018	\$2090	\$2162	\$2384
NEW	LAVA FRONT VIEW PROPANE VARIABLE ELECTRONIC IGNITION BURNER (VEP)	LAFV-##-VEP	\$2137	\$2209	\$2281	\$2503
NEW	GLOWFIRE™ ARIZONA WEATHERED OAK CHARRED LOGS	GFWOC-##	\$679	\$792	\$1132	\$1338

Includes Burner, Lava Rock, Black Embers, Flex Line, Damper Clamp, Manual, and Rating Plate.

EN/EP = ON/OFF Dexen Controls

VEN/VEP = Variable SIT Proflame 1 controls



Price Guide effective July 7, 2025

BEDROCK SERIES



BEDROCK TRADITIONAL - The Traditional featuring **NEW** GlowFire™ Log Technology, The first-of-its-kind on the open face fireplace integrates the burner tubes inside the actual logs, giving the look and feel of the log on fire. GlowFire™ Logs are specifically designed to bring more fuel efficiencies to the gas log market by consuming less fuel while still creating a fuller

more robust flame compared to a traditional gas log set. The ceramic log mixture radiates more heat out into the room while also creating less flame infringement drastically reducing sooting. *Must add lava rock or 1/2" reflective glass and GlowFire™ Logs.

TRADITIONAL	MODEL#	48"	60"	72"
NEW BEDROCK TRADITIONAL DROP-IN BURNER NATURAL GAS FEATURING GLOWFIRE™ LOGS (EN)*	LDBT##L-EN	\$2065	\$2271	\$2570
NEW BEDROCK TRADITIONAL DROP-IN BURNER PROPANE FEATURING GLOWFIRE™ LOGS (EP)*	LDBT##L-EP	\$2318	\$2539	\$2930
NEW WESTERN DRIFTWOOD BEDROCK TRADITIONAL GLOWFIRE™ LOGS	LDBT-DW##	\$1057	\$1431	\$1534

*Must add logs. Includes Deck, Base, S.I.T. Controls w/Remote, LED Lights w/Remote, Rating Plate, Installation Manual , Flex line and Fittings.



BEDROCK CONTEMPORARY LINEAR DROP-IN BURNER - Drop-in Burner is specifically designed to fit any trough style masonry fireplace or contemporary designed wood burning fireplace. Operated with an SIT Proflame II control system including convenient flame modulation on a sleek hand held remote. The Bedrock Burner is also the **FIRST** vented Drop-in

burner system featuring IC controlled LED lighting that operates with a remote or easy to use App.

*Must add lava rock or 1/2" reflective glass. Cannonballs and Driftwood logs optional.

IN DEMAND

CONTEMPORARY	MODEL#	24"	36"	48"	60"	72"	84"	96"
LINEAR DROP-IN BURNER & CASE (NG)*	LDB##L-EN	\$2749	\$2921	\$3127	\$3356	\$3551	\$3735	\$3941
LINEAR DROP-IN BURNER & CASE (LP)*	LDB##L-EP	\$2807	\$2979	\$3185	\$3413	\$3609	\$3792	\$3998

Includes Case, Burner, S.I.T. Controls w/Remote, LED Lights w/Remote, Rating Plate, Installation Manual , Flex line and fittings.



BEDROCK II VENTLESS LINEAR DROP-IN BURNER - Operated with an SIT Proflame II control system including convenient flame modulation on a sleek hand held remote. The Ventless Bedrock Burner is also the **LARGEST** ventless Drop-in Burner system at 60" featuring IC controlled LED lighting that operates with a remote or easy to use App.

Available in 4 convenient sizes, install indoors or under a covered patio & add 1/2" reflective glass to finish off. Use glass media only. *Must add 1/2" reflective glass.

VENTLESS	MODEL#	24"	36"	48"	60"
BEDROCK II VENTLESS LINEAR DROP-IN BURNER & CASE NATURAL GAS*	VFLDB##L-EN	\$2749	\$2921	\$3127	\$3356
BEDROCK II VENTLESS LINEAR DROP-IN BURNER & CASE PROPANE*	VFLDB##L-EP	\$2807	\$2979	\$3185	\$3413

Includes Case, Burner, S.I.T. Controls w/Remote, LED Lights w/Remote, Rating Plate, Installation Manual , Flex line and Fittings.



Price Guide effective July 7, 2025

customerservice@grandcanyonlogs.com • (602) 344-4217 • grandcanyonlogs.com

SELECT YOUR INDOOR/OUTDOOR LOGS



VENTED LOGS - All logs manufactured by Grand Canyon Gas Logs are individually cast and hand painted to perfection. All logs are built with a high temperature concrete, ceramic refractory, and stainless steel fiber mesh. Logs installed indoors carry a lifetime warranty and logs that are installed outside carry a 5-year warranty.

IN DEMAND

VENTED GAS LOG SET	BURNER COMPATIBILITY	MODEL#	18"	21"	24"	30"	36"	42"	48"	60"
ARIZONA WEATHERED OAK (AWO)	2 & 3	AWO##LOGS	\$279 36#/1	\$350 44#/1	\$483 63#/1	\$690 103#/1	\$890 124#/2	\$1173 185#/2	\$1455 205#/2	\$1630 215#/2
ARIZONA JUNIPER (AJ)	2 & 3	AJ##LOGS	\$343 35#/1	\$407 43#/1	\$542 56#/1	\$749 105#/1	\$949 125#/2	\$1231 210#/2		
QUAKING ASPEN (ASPEN)	2 & 3	ASPEN##LOGS	\$343 35#/1		\$542 43#/1	\$749 120#/1	\$949 125#/2	\$1231* 210#/2	\$1519* 225#/2	\$1686* 255#/2
ARIZONA WEATHERED OAK CHARRED (AWOC)	2 & 3	AWOC##LOGS	\$395 45#/1		\$549 72#/1	\$794 115#/1	\$955 146#/2	\$1236 205#/2		
WESTERN DRIFTWOOD (DRIFTWOOD)	2 & 3	DRIFTWOOD##LOGS	\$343 35#/1	\$407 43#/1	\$542 56#/1	\$749 105#/2	\$949 125#/2	\$1231 210#/2		

*NEW ITEM **##=SIZE

weight/boxes

SELECT YOUR BURNER



2 Burner
(2BRN-24)



3 Burner -
Stainless Steel
(3BRN-24-SS)

VENTED BURNERS - 100% American manufactured burners listed and tested to the ANSI standard. Indoor burners feature ceramic coated chassis with metal stock burner tubes all welded together. Burner denoted "-SS" are stainless steel for outdoor use. Available with logs AWO, AWOC, AJ, ASPEN, and DRIFTWOOD. All burner kits include burner, lava rock, black embers, fittings, flex line, damper clamp, and vermiculite (LP ONLY). For LP refer to assembled systems.

INDOOR VENTED BURNERS SET	MODEL#	18"	21"	24"	30"	36"	42"	48"	60"
GRAND CANYON 2-BURNER	2BRN-##	\$349 30#	\$408 35#	\$441 45#	\$497 50#	\$688 55#	\$837 60#	\$1313* 75#	\$1504* 85#
GRAND CANYON 3-BURNER	3BRN-##	\$567 33#	\$626 38#	\$654 48#	\$717 53#	\$905 58#	\$1055 63#		

*Height profile of a 3-burner.

Logs not included

OUTDOOR VENTED BURNERS SET	MODEL#	18"	21"	24"	30"	36"	42"	48"	60"
GRAND CANYON 2-BURNER	2BRN-##-SS	\$625 30#	\$727 35#	\$784 45#	\$872 50#	\$1192 55#	\$1441 60#	\$2089 75#	\$2714 85#
GRAND CANYON 3-BURNER	3BRN-##-SS	\$872 33#	\$1005 38#	\$1164 48#	\$1260 53#	\$1532 58#	\$1619 63#		

*##=SIZE

Logs not included



Price Guide effective July 7, 2025

SELECT YOUR ASSEMBLED BURNER



2 Burner (2BRN-24-NG-SP)



3 Burner (3BRN-24-NG-MVKEI-GCRK)

ASSEMBLED INDOOR 2 AND 3 BURNERS - Assembled burner systems feature factory tested and installed control systems. Tested to the ANSI standard, these assembled systems are a plug and play approach. Indoor use ONLY, ceramic coated chassis with metal bar stock burner tubes all welded together. Available with logs AWO, AWOC, AJ, ASPEN, and DRIFTWOOD. All burner kits include burner, lava rock, black embers, flex line, damper clamp, and vermiculite (LP ONLY).

ASSEMBLED INDOOR 2-BURNER SERIES MODEL#	18"	21"	24"	30"	36"	42"	48"	60"
2BRN-##-NG-SP Assembled 2 burner natural gas with safety pilot system.	\$550	\$610	\$642	\$698	\$888	\$1035	\$1506	\$1695
2BRN-##-NG-MVK-GCRK Assembled 2 burner natural gas with millivolt and remote system.	\$966	\$1025	\$1057	\$1113	\$1302	\$1450	\$1921	\$2109
2BRN-##-NG-MMVR Assembled 2 burner natural gas with modulating millivolt and remote system.	\$1077	\$1136	\$1168	\$1225	\$1413	\$1561	\$2032	\$2221
2BRN-##-NG-MVKEI-GCRK Assembled 2 burner natural gas with battery electronic and remote system.	\$1293	\$1351	\$1383	\$1440	\$1628	\$1777	\$2247	\$2436
2BRN-##-LP-SP Assembled 2 burner propane with safety pilot system.	\$608	\$667	\$699	\$756	\$945	\$1092	\$1564	\$1752
2BRN-##-LP-MVK-GCRK Assembled 2 burner propane with millivolt and remote system.	\$1046	\$1106	\$1137	\$1194	\$1382	\$1531	\$1921	\$2190
2BRN-##-LP-MMVR Assembled 2 burner propane with modulating millivolt remote.	\$1134	\$1194	\$1226	\$1281	\$1470	\$1618	\$2089	\$2278
2BRN-##-LP-MVKEI-GCRK Assembled 2 burner propane with battery electronic and remote system.	\$1374	\$1433	\$1465	\$1521	\$1710	\$1858	\$2329	\$2517

Logs not included

ASSEMBLED INDOOR 3-BURNER SERIES MODEL#	18"	21"	24"	30"	36"	42"
3BRN-##-NG-SP Assembled 3 burner natural gas with safety pilot system.	\$765	\$826	\$853	\$1175	\$1364	\$1512
3BRN-##-NG-MVK-GCRK Assembled 3 burner natural gas with millivolt and remote system.	\$1181	\$1241	\$1268	\$1551	\$1739	\$1887
3BRN-##-NG-MMVR Assembled 3 burner natural gas with modulating millivolt and remote system.	\$1293	\$1352	\$1379	\$1441	\$1628	\$1777
3BRN-##-NG-MVKEI-GCRK Assembled 3 burner natural gas with battery electronic and remote system.	\$1507	\$1568	\$1594	\$1655	\$1844	\$1992
3BRN-##-LP-SP Assembled 3 burner propane with safety pilot system.	\$823	\$883	\$909	\$972	\$1160	\$1307
3BRN-##-LP-MVK-GCRK Assembled 3 burner propane with millivolt and remote system.	\$1262	\$1321	\$1348	\$1410	\$1598	\$1746
3BRN-##-LP-MMVR Assembled 3 burner propane with modulating millivolt remote.	\$1349	\$1410	\$1437	\$1498	\$1685	\$1833
3BRN-##-LP-MVKEI-GCRK Assembled 3 burner propane with battery electronic and remote system.	\$1589	\$1649	\$1676	\$1738	\$1925	\$2073

*##=SIZE

Logs not included



Price Guide effective July 7, 2025

customerservice@grandcanyongaslogs.com • (602) 344-4217 • grandcanyongaslogs.com

SELECT YOUR SEE THROUGH LOG SET



VENTED SEE THROUGH INDOOR/OUTDOOR LOGS - All logs manufactured by Grand Canyon Gas Logs are individually cast and hand painted to perfection. All logs are built with a high temperature concrete, ceramic refractory, and stainless-steel fiber mesh. Logs installed indoors carry a lifetime warranty and logs that are installed outside carry a 5-year warranty.

IN DEMAND

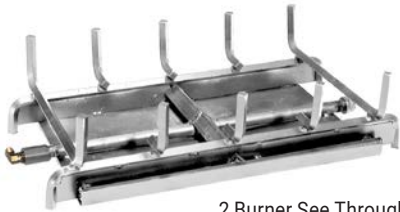
IN DEMAND

SEE THROUGH LOG SETS	BURNER COMPATIBILITY	MODEL#	18"	24"	30"	36"	42"	48"	60"
ARIZONA WEATHERED OAK (AWOST)	2,3	AWOST##LOGS	\$350 38#/1/7	\$549 71#/1/8	\$755 115#/1/9	\$949 135#/2/10	\$1352 196#/2/13	\$1557 215#/2/15	\$1686 235#/2/15
WESTERN DRIFTWOOD (DRIFTWOODST)	2,3	DRIFTWOODST##LOGS	\$407 33#/1/7	\$613 80#/1/8	\$818 113#/1/9	\$1019 153#/2/10	\$1327 241#/2/12		
QUAKING ASPEN (ASPENST)	2,3	ASPENST##LOGS	\$407 33#/1/7	\$613 80#/1/8	\$842 113#/1/9	\$1019 153#/2/10	\$1352* 245#/2/13	\$1557* 265#/2/15	\$1701* 290#/2/15
ARIZONA JUNIPER (AJST)	2,3	AJST##LOGS	\$407 33#/1/7	\$613 80#/1/8	\$818 113#/1/9	\$1019 153#/2/10	\$1327 241#/2/12		
ARIZONA WEATHERED OAK CHARRED (AWOCST)	2,3	AWOCST##LOGS	\$407 33#/1/8	\$613 80#/1/8	\$858 113#/1/9	\$1090 153#/2/10	\$1385 241#/2/12		

*NEW ITEM **##=SIZE

weight/boxes/log number in set

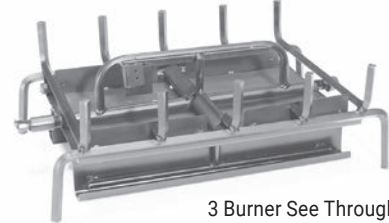
SELECT YOUR SEE THROUGH BURNER



2 Burner See Through
- Stainless Steel
(2BRN-ST24-SS)



3 Burner - See Through
(3BRN-ST24)



3 Burner See Through
- Stainless Steel
(3BRN-ST24-SS)

SEE THROUGH BURNERS - 100% American manufactured burners listed and tested to the ANSI standard. Indoor burners feature ceramic coated chassis with metal bar stock burner tubes all welded together. Burner denoted "-SS" are stainless steel for outdoor use. Available with logs AWO, AWOC, AJ, ASPEN, and DRIFTWOOD. All burner kits include burner, lava rock, black embers, fittings, flex line, damper clamp, and vermiculite (LP ONLY). For LP refer to assembled systems page.

SEE THROUGH BURNERS	MODEL#	18"	24"	30"	36"	42"	48"	60"
SEE THROUGH 2-BURNER	2BRN-ST##	\$681 30#	\$803 45#	\$878 50#	\$1094 55#	\$1311 60#	\$1845* 75#	\$2258* 85#
SEE THROUGH 3-BURNER	3BRN-ST##	\$1014 33#	\$1164 48#	\$1334 53#	\$1742 58#	\$2033 63#		

*2 burner system, middle & elevated back burner w/height of the 3 burner

Logs not included

SEE THROUGH STAINLESS STEEL BURNERS	MODEL#	18"	24"	30"	36"	42"	48"	60"
SEE THROUGH STAINLESS STEEL 2-BURNER	2BRN-ST##-SS	\$1209 30#	\$1428 45#	\$1557 50#	\$1944 55#	\$2326 60#	\$2624 75#	\$3194 90#
SEE THROUGH STAINLESS STEEL 3-BURNER	3BRN-ST##-SS	\$1455 33#	\$1931 48#	\$2108 53#	\$2577 58#	\$2693 63#		

Note: Stainless Steel See Through Burners are special order, 2-3 weeks lead time. **##=SIZE

Logs not included



Price Guide effective July 7, 2025

SELECT YOUR SEE THROUGH ASSEMBLED BURNER



2 Burner (2BRN-ST24-NG-MVKEI-GCRK)



3 Burner (3BRN-ST24-NG-MVKEI-GCRK)

ASSEMBLED INDOOR 2 AND 3 BURNER SEE THROUGH SYSTEMS - 100% American manufactured burners listed and tested to the ANSI standard. Indoor burners feature ceramic coated chassis with metal bar stock burner tubes all welded together. Burner denoted "-SS" are stainless steel for outdoor use. Available with logs AWO, AWOC, AJ, ASPEN, and DRIFTWOOD. All burner kits include burner, lava rock, black embers, fittings, flex line, damper clamp, and vermiculite (LP ONLY). For LP refer to assembled systems.

ASSEMBLED SEE THROUGH INDOOR 2-BURNER SERIES MODEL#	18"	24"	30"	36"	42"	*48"	*60"
2BRN-ST-##-NG-SP Assembled 2 burner natural gas with safety pilot system.	\$879	\$1001	\$1075	\$1290	\$1504	\$2032	\$2442
2BRN-ST-##-NG-MVK-GCRK Assembled 2 burner natural gas with millivolt and remote system.	\$1295	\$1415	\$1489	\$1704	\$1919	\$2447	\$2856
2BRN-ST-##-NG-MMVR Assembled 2 burner natural gas with modulating millivolt and remote system.	\$1406	\$1526	\$1601	\$1815	\$2030	\$2559	\$2967
2BRN-ST-##-NG-MVKEI-GCRK Assembled 2 burner natural gas with battery electronic and remote system.	\$1621	\$1743	\$1816	\$2030	\$2245	\$2774	\$3183
2BRN-ST-##-LP-SP Assembled 2 burner propane with safety pilot system.	\$936	\$1058	\$1132	\$1346	\$1561	\$2089	\$2499
2BRN-ST-##-LP-MVK-GCRK Assembled 2 burner propane with millivolt and remote system.	\$1375	\$1496	\$1570	\$1784	\$1999	\$2528	\$2937
2BRN-ST-##-LP-MMVR Assembled 2 burner propane with modulating millivolt remote.	\$1463	\$1585	\$1658	\$1872	\$2087	\$2616	\$3025
Assembled 2 burner propane with battery electronic and remote system.	\$1703	\$1824	\$1897	\$2112	\$2327	\$2855	\$3264

*2 burner system, middle & elevated back burner w/height of the 3 burner

Logs not included

ASSEMBLED INDOOR 3-BURNER SERIES MODEL#	18"	24"	30"	36"	42"
3BRN-ST-##-NG-SP Assembled 3 burner natural gas with safety pilot system.	\$1209	\$1358	\$1788	\$2192	\$2481
3BRN-ST-##-NG-MVK-GCRK Assembled 3 burner natural gas with millivolt and remote system.	\$1624	\$1774	\$2163	\$2567	\$2856
3BRN-ST-##-NG-MMVR Assembled 3 burner natural gas with modulating millivolt and remote system.	\$1736	\$1885	\$2053	\$2457	\$2746
3BRN-ST-##-NG-MVKEI-GCRK Assembled 3 burner natural gas with battery electronic and remote system.	\$1951	\$2100	\$2268	\$2672	\$2961
3BRN-ST-##-LP-SP Assembled 3 burner propane with safety pilot system.	\$1267	\$1415	\$1585	\$1989	\$2276
3BRN-ST-##-LP-MVK-GCRK Assembled 3 burner propane with millivolt and remote system.	\$1705	\$1854	\$2022	\$2426	\$2715
3BRN-ST-##-LP-MMVR Assembled 3 burner propane with modulating millivolt remote.	\$1792	\$1942	\$2110	\$2514	\$2804
3BRN-ST-##-LP-MVKEI-GCRK Assembled 3 burner propane with battery electronic and remote system.	\$2032	\$2182	\$2349	\$2753	\$2961

*##=SIZE

Logs not included



Price Guide effective July 7, 2025

customerservice@grandcanyongaslogs.com • (602) 344-4217 • grandcanyongaslogs.com

SELECT YOUR JUMBO/JUMBO SLIMLINE



VENTED JUMBO LOG SETS - Indoor/Outdoor Logs, All logs manufactured by Grand Canyon Gas Logs are individually cast and hand painted to perfection. All logs are built with a high temperature concrete with a ceramic refractory and Stainless-Steel fiber mesh. Logs installed indoors carry a lifetime warranty and logs that are installed outside carry a 5-year warranty.

VENTED FRONT VIEW JUMBO LOG SETS	MODEL#	24"	30"	36"	42"	48"	60"	72"	84"	96"	108"	120"
ARIZONA WEATHERED OAK JUMBO*	JUMBOAWO##LOGS			\$1470 225#/3/11	\$1991 325#/3/13	\$2184 355#/3/15	\$2679 435#/3/15					
AZ WEATHERED OAK CHARRED JUMBO*	JUMBOAWOC##LOGS							\$4553 450#/6/0	\$5222 650#/6/0	\$5628 710#/6/0	\$6161 790#/6/0	\$6965 870#/6/0
AZ WEATHERED OAK JUMBO SLIM**	JUMBOSLIMAWO##LOGS	\$813 115#/3/8	\$988 150#/3/9	\$1476 190#/3/11	\$1996 240#/3/13	\$2189 275#/3/15	\$2690 365#/3/15					
AZ WEATHERED OAK CHARRED JUMBO SLIM	JUMBOSLIMAWOC##LOGS							\$4553	\$5171	\$5628	\$6161	\$6965

*Only 21" deep burners. **Only 18" deep burners.

weight/boxes/log number in set

JUMBO SEE THROUGH LOG SET	MODEL#	24"	30"	36"	42"	48"	60"	72"	84"	120"
*AZ WEATHERED OAK JUMBO SEE THROUGH	JUMBOAWOST##LOGS	\$1206 115#/3/9	\$1340 150#/3/10	\$1609 190#/3/13	\$2132 240#/3/13	\$2339 275#/3/15	\$2854 365#/3/15	\$4301 385#/5/26	\$4454 5/24	\$7026 5/30

*Only 24" deep burners.

weight/boxes/log number in set

SELECT YOUR JUMBO/JUMBO SLIMLINE BURNER

CONTACT US FOR LARGER SIZES



Jumbo Burner (JUMBOBRNR-36)



Jumbo Burner - Stainless Steel (JUMBOBRNR-36-SS)



Jumbo See Through Burner (JUMBOBRNR-ST-36)

JUMBO SERIES BURNERS - Ceramic coated chassis w/metal bar stock and burner tubes all welded together. Available w/JUMBO/JUMBOSLIM AWO Logs ONLY. Fits Isokern Magnum Series 18" Deep Burner. Burners denoted - "-SS" are for outdoor use. All burners include lava rock, fittings, flex line, embers, and damper clamp. **ALL Burners NG.**

VENTED FRONT VIEW JUMBO BURNERS	MODEL#	24"	30"	36"	42"	48"	60"	72"	84"	96"	108"	120"
JUMBO FRONT VIEW BURNER	JUMBOBRNR-##			\$2883 95#	\$3183 110#	\$3479 130#	\$4011 160#	\$5657 190#	\$6372 230#	\$7357 250#	\$7926 280#	\$8778 280#
JUMBO SLIMLINE BURNER	JUMBOSLIMBRNR-##	\$1885 55#	\$2116 65#	\$2583 75#	\$2828 90#	\$3155 110#	\$3611 140#	\$5657 170#				

*Sizes 72"+ special order burner, 3-4 weeks lead time.

Logs not included

FRONT VIEW JUMBO STAINLESS STEEL BURNERS	MODEL#	24"	30"	36"	42"	48"	60"	72"	84"	120"
JUMBO BURNER STAINLESS STEEL	JUMBOBRNR-##-SS			\$4440 95#	\$4861 110#	\$5342 130#	\$6139 160#	\$7974	\$8512	\$13581
JUMBO SLIMLINE BURNER STAINLESS STEEL*	JUMBOSLIMBRNR-##-SS	\$3109 55#	\$3461 65#	\$4277 75#	\$4711 90#	\$5194 110#	\$5943 140#			

*Fits Isokern Magnum Series 18" Deep Burner.

Logs not included

SEE THROUGH JUMBO BURNERS	MODEL#	24"	30"	36"	42"	48"	60"	72"	84"	120"
JUMBO SEE THROUGH BURNER	JUMBOBRNR-ST##	\$3155 55#	\$3889 65#	\$4950 75#	\$5493 90#	\$6248 110#	\$6933 140#	\$7922 165#	\$9022 180#	\$13826 200#
JUMBO SEE THROUGH BURNER STAINLESS STEEL	JUMBOBRNR-ST##-SS			\$8193	\$9117	\$10360	\$10941			

Fits Isokern Magnum Series 24" Deep Burner. Stainless Steel See Through Burners are special order, 3-4 weeks lead time.

Logs not included



Price Guide effective July 7, 2025

VENTED CONTEMPORARY



4" Cannonballs
(CB4-8-##)

CANNONBALLS - Available in size 2", 4", and 6". These replica sizes can be installed indoor or outdoor for endless viewing pleasure. These can be paired with the Grand Canyon Gas Logs Glass Burner or H Burner then nestled in a bed of lava granules or crushed reflective glass. Stacking choices are as unique as each piece of history when choosing to stack in a uniform pattern or use all three sizes to create a random unique style.

NEW
NEW
NEW

CANNONBALLS	MODEL#	PRICE	18"	24"	30"	36"	42"	48"	60"
2" CANNONBALLS	CB2-12-##	\$119/set	4	5	7	8	9	10	13
4" CANNONBALLS	CB4-8-##	\$179/set	3	4	5	6	6	8	10
6" CANNONBALLS	CB6-4-##	\$239/set	4	5	6	7	9	10	12

##= COLOR (B) BLACK; (GRY) GRAY; (WHT) WHITE

SETS: 3 ROWS DEEP/2 ROWS HIGH

LINEAR LOGS	MODEL#	24"	36"	48"	60"	72"	84"	96"	108"	120"
LINEAR WESTERN DRIFTWOOD	WD-LINEAR-##LOGS	\$234 24#/1/6	\$322 32#/1/8	\$459 41#/1/9	\$678 63#/2/11	\$749 85#/2/13	\$922 63#/2/16	\$1090 85#/2/18	\$1283 93#/2/22	\$1431 102#/2/24

GLASS BURNERS (INDOOR/OUTDOOR)	MODEL#	18"	24"	30"	36"	42"	48"	60"	72"	84"	96"
GLASS BURNER - NG	GLASSBRN-##/12-H	\$218	\$227	\$280							
GLASS BURNER - H STYLE INDOOR	GLASSBRN-##/14-H				\$539	\$612	\$886	\$1137	\$1415	\$1845	
GLASS BURNER - H STYLE OUTDOOR	GLASSBRN-##/12-H-SS	\$288	\$337	\$697							
GLASS BURNER - H STYLE OUTDOOR	GLASSBRN-##/14-H-SS				\$794	\$987	\$932	\$1359	\$2150	\$2306	\$2544

Also choose Lava Granules (HP-B-GR-10) and Glowing Embers (GLE-6B) from page 12 to add to your order or choose glass from page 13.



Linear Western Driftwood
(WD-LINEAR-36LOGS)



Glass Burner - Stainless Steel
(GLASSBRN-36/14-H-SS)



Glass Burner w/Modulating Millivolt and Remote System - NG
(GLASSBRN-30/12-H-NG-MMVR)

VENTED CONTEMPORARY - ASSEMBLED

ASSEMBLED WITH REMOTE SYSTEM

IN DEMAND

ASSEMBLED GLASS BURNERS (INDOOR/OUTDOOR)	MODEL#	18"	24"	30"	36"	42"
GLASS BURNER W/MILLIVOLT AND REMOTE SYSTEM - NG	GLASSBRN-##/12-H-NG-MVK-GCRK	\$836	\$844	\$898		
GLASS BURNER W/MILLIVOLT AND REMOTE SYSTEM - NG	GLASSBRN-##/14-H-NG-MVK-GCRK				\$1155	\$1226
GLASS BURNER W/MILLIVOLT AND REMOTE SYSTEM - LP	GLASSBRN-##/12-H-LP-MVK-GCRK	\$941	\$925	\$1003		
GLASS BURNER W/MILLIVOLT AND REMOTE SYSTEM - LP	GLASSBRN-##/14-H-LP-MVK-GCRK				\$1235	\$1306
GLASS BURNER W/MODULATING MILLIVOLT AND REMOTE SYSTEM - NG	GLASSBRN-##/12-H-NG-MMVR	\$948	\$897	\$1009		
GLASS BURNER W/MODULATING MILLIVOLT AND REMOTE SYSTEM - NG	GLASSBRN-##/14-H-NG-MMVR				\$1266	\$1337
GLASS BURNER W/MODULATING MILLIVOLT AND REMOTE SYSTEM - LP	GLASSBRN-##/12-H-LP-MMVR	\$1005	\$1012	\$1066		
GLASS BURNER W/MODULATING MILLIVOLT AND REMOTE SYSTEM - LP	GLASSBRN-##/14-H-LP-MMVR				\$1323	\$1395
GLASS BURNER W/BATTERY ELECTRONIC AND REMOTE SYSTEM - NG	GLASSBRN-##/12-H-NG-MVKEI-GCRK	\$1163	\$989	\$1225		
GLASS BURNER W/BATTERY ELECTRONIC AND REMOTE SYSTEM - NG	GLASSBRN-##/14-H-NG-MVKEI-GCRK				\$1300	\$1552
GLASS BURNER W/BATTERY ELECTRONIC AND REMOTE SYSTEM - LP	GLASSBRN-##/12-H-LP-MVKEI-GCRK	\$1244	\$1071	\$1306		
GLASS BURNER W/BATTERY ELECTRONIC AND REMOTE SYSTEM - LP	GLASSBRN-##/14-H-LP-MVKEI-GCRK				\$1381	\$1453

Also choose Lava Granules (HP-B-GR-10) and Glowing Embers (GLE-6B) from page 12 to add to your order or choose glass from page 13.



Price Guide effective July 7, 2025

CONTROLS, TWIGS, AND ACCESSORIES

IN DEMAND

ACCESSORIES	MODEL#	MSRP	FEATURES	BURNER
GCRK	GCRK	\$169	Basic On/Off Operations; RF Transmitter & Receiver; LCD Temp Display; Includes Batteries & Wall Plate	MVQMKN/LP; HCMVQMKN/LP; ALL EIS Configurations
WBPB-12/24	WBPB-12	\$522	Bluetooth Wi-Fi & Manual Control; Connect with Home Automation or Weather Smart App; 24V System	ALL EIS Configurations: WBECS
72" PILOT EXTENSION FOR WEATHER BEATER PILOT ASSEMBLY (PILOT NOT INCLUDED)	WB-72EX	\$407		WBECS & HC-WBECS
LARGE INSTALLATION KIT FLEX, KEY, FITTING 3/4"	KIT-LG	\$139		
SMALL INSTALLATION KIT FLEX, KEY, FITTING 1/2"	KIT-SM	\$116		



AZ JUNIPER TWIG SET (AJTWIG3)



GRANULES (HP-B-GR-10)



VOLCANIC ROCK (HP-B-R-10)



PLATINUM EMBERS (PBE-1)



VERMICULITE (VEM-8)



LAVA PEBBLES (NL-5080)

TWIG KITS & MEDIA	MODEL#	LBS.	MSRP
AZ JUNIPER TWIG SET - 3 TWIGS	AJTWIG3	7	\$72
QUAKING ASPEN TWIG SET - 4 TWIGS	ASPENWIG4	8	\$139
AZ WEATHERED OAK CHARRED TWIG SET - 3 TWIGS	AWOCTWIG3	9	\$89
ARIZONA WEATHERED OAK TWIG 3 PC SET - 3 TWIGS	AWOTWIG3	9	\$89
ARIZONA WEATHERED OAK TWIG 5 PC SET - 5 TWIGS	AWOTWIG5	15	\$179
BLUE PINE SPLIT TWIG SET LOGS ONLY 5 PC SET - 5 TWIGS	BPSTWIG5	11	\$167
DRIFTWOOD TWIG SET - 3 TWIGS	DRIFTWOODTWIG3	7	\$72
BLACK GRANULES - 10 LB. BAG	HP-B-GR-10	10	\$24
BLACK VOLCANIC ROCK - 10 LB. BAG	HP-B-R-10	10	\$24
NEW BLACK GLOWING EMBERS - 6 OZ. BAG	GLE-6B	.10	\$32
NEW PLATINUM BRIGHT EMBERS - 1 GRAM	PBE-1	.01	\$20
1" - 2" LAVA PEBBLES - 50 LB. BAG	NL-3050	50	\$147
2" - 3" LAVA PEBBLES - 50 LB. BAG	NL-5080	50	\$147
NEW 1 GRAM BAG GLOWING WIRE	GLW-1	.0022	\$10
NEW 6 OZ. BAG BLACK VERMICULITE	VEM-6	.375	\$20

Indoor/Outdoor Logs compatible with ALL Grand Canyon Gas Logs log sets. Twigs are an easy way to add mass and height to a gas log set. Available in ALL log species.



Price Guide effective July 7, 2025

FIRE GLASS



POSEIDON BLUE
(RFG-10-PB)



ADRIATIC TOPAZ
(RFG-10-AT)



KRYSTALLO DIAMOND
(RFG-10-KD)



VESPER BLACK
(RFG-10-VB)



APOLLO BRONZE
(RFG-10-AB)



TERRA COPPER
(RFG-10-TC)



AMBER DIAMOND
(RFG-10-AG)

FIRE GLASS - 1/2" reflective premium fire glass in 10lb. containers.

GLASS 1/2" CRUSHED REFLECTIVE	MODEL#	LBS	MSRP	PER TUB
1/2" POSEIDON RFG (COBALT) - 10 LB. BAG	RFG-10-PB	10	\$5.25 PER LB.	\$52.50
1/2" ADRIATIC TOPAZ RFG (JASPER) - 10 LB. BAG	RFG-10-AT	10	\$5.25 PER LB.	\$52.50
1/2" KRYSTALLO RFG (STARFIRE) - 10 LB. BAG	RFG-10-KD	10	\$5.25 PER LB.	\$52.50
1/2" VESPER RFG (BLACK) - 10 LB. BAG	RFG-10-VB	10	\$5.25 PER LB.	\$52.50
1/2" APOLLO RFG (BRONZE) - 10 LB. BAG	RFG-10-AB	10	\$5.25 PER LB.	\$52.50
1/2" TERRA RFG (COPPER) - 10 LB. BAG	RFG-10-TC	10	\$5.25 PER LB.	\$52.50
1/2" AMBER DIAMOND RFG (AMBER) - 10 LB. BAG	RFG-10-AG	10	\$5.25 PER LB.	\$52.50

Indoor/Outdoor use. Compatible with ALL Grand Canyon Gas Logs glass and fire-pit burners. Glass is priced per lb., sold 10 lbs. per order. Calculator found on Grand Canyon Gas Logs website.

CONTROLS & ACCESSORIES



SAFETY PILOT KIT (SPQMKLP)



BATTERY ELECTRONIC (MVKEIKLP)



MODULATING MILLIVOLT (MMVKR-LP)

DESCRIPTION	MODEL#	MSRP	USE	FEATURES	OPTIONS	BURNER CAPABILITY
MANUAL VALVE	MA	\$79	I/O	Manual On/Off w/ Knob or Wrench Operations ONLY; Low Profile Design; Max Inlet 14" W.C., Valve Temp Rating 300°; 90,000 BTU's (NG/LP) - MA; 240,000 BTU's (NG/LP) - MAHC	N/A	MA - 2 Burner/Glass/Kiva - 18"-42" (NG/LP)
HIGH CAPACITY MANUAL VALVE	MAHC-GC	\$101	I/O		N/A	3 Burner - 18"-30" (NG/LP)
SAFETY PILOT NATURAL GAS	SPQMKN	\$198	I/O	Standing Pilot System; Manual On/Off Operations ONLY; Low Profile Design; Max Inlet 14" W.C.; Valve Temp Rating 300°; (NG) 90,000 BTU's; (LP) 90,000 BTU's	N/A	2 Burner/Glass/Kiva - 18"-30" (NG); 18"-42" (LP)
SAFETY PILOT PROPANE	SPQMKLP	\$198	I/O		N/A	3 Burner - 18"-24" (NG); 18"-36" (LP) Jumbo/Jumbo Slimline - N/A (NG); N/A (LP)
HIGH CAPACITY SAFETY PILOT NATURAL GAS	HCSPK-NG	\$445	I/O	Standing Pilot System; Manual On/Off Operations ONLY; Max Inlet 14" W.C.; Valve Temp Rating 250°; (NG) 142,000 BTU's; (LP) 142,000 BTU's	N/A	2 Burner/Glass/Kiva - 18"-42" (NG); 18"-60" (LP)
HIGH CAPACITY SAFETY PILOT PROPANE	HCSPK-LP	\$467	I/O		N/A	3 Burner - 18"-42" (NG); 18"-42" (LP) Jumbo/Jumbo Slimline - 24"-30" (NG); 24"-48" (LP)
MILLIVOLT QUICK MOUNT KIT NATURAL GAS	MVQMKN	\$422	IN	Standing Pilot System; On/Off Operations ONLY; Low Profile Design; Max Inlet 14" W.C.; Valve Temp Rating 175°; (NG) 3"-5" W.C. 82,000 BTU's; (LP) 8"-12" W.C. 110,000 BTU's	GCRK (On/Off) Remote GCWS (On/Off) Wall Switch	2 Burner/Glass/Kiva - 18"-30" (NG); 18"-42" (LP)
MILLIVOLT QUICK MOUNT KIT PROPANE	MVQMKLP	\$445	IN			3 Burner - 18"-24" (NG); 18"-36" (LP) Jumbo/Jumbo Slimline - N/A (NG); 24"-30" (LP)
MODULATION MILLIVOLT KIT NATURAL GAS	MMVKR-NG	\$703	IN	INCLUDES REMOTE; Standing Pilot System; Variable Flame Height; Low Profile Design; Max Inlet 14" W.C.; Valve Temp Rating 225°; (NG) 7" W.C. 120,000 BTU's; (LP) 7"-14" W.C. 120,000 BTU's	N/A	2 Burner/Glass/Kiva - 18"-42" (NG); 18"-42" (LP)
MODULATION MILLIVOLT KIT PROPANE	MMVKR-LP	\$703	IN		N/A	3 Burner - 18"-42" (NG); 18"-42" (LP) Jumbo/Jumbo Slimline - 24"-30" (NG); 24"-30" (LP)
HIGH CAPACITY MILLIVOLT NATURAL GAS	HCMVQMKN	\$636	IN	Standing Pilot System; High Volume Output Millivolt System; On/Off Operations ONLY; Max Inlet 14" W.C.; Valve Temp Rating 175°; (NG) 3"-5" W.C. 240,000 BTU's; (LP) 8"-12" W.C. 320,000 BTU's	GCRK (On/Off) Remote GCWS (On/Off) Wall Switch	2 Burner/Glass/Kiva - 18"-60" (NG); 18"-42" (LP)
HIGH CAPACITY MILLIVOLT PROPANE	HCMVQMKLP	\$692	IN			3 Burner - 18"-42" (NG); 18"-42" (LP) Jumbo/Jumbo Slimline - 24"-108" (NG); 24"-120" (LP)
BATTERY ELECTRONIC NATURAL GAS	MVKEIKN	\$736	IN	INCLUDES REMOTE; Non-Standing Pilot; 2-D Cell Battery Electronic Ignition; Pilot on Demand System; On/Off Operations ONLY; Max Inlet 14" W.C., Valve Temp Rating 175°; (NG) 3"-7" W.C. 120,000 BTU's; (LP) 8"-14" W.C. 140,000 BTU's	GCWS (On/Off) Wall Switch	2 Burner/Glass/Kiva - 18"-60" (NG); 18"-60" (LP) 3 Burner - 18"-42" (NG); 18"-42" (LP) Jumbo/Jumbo Slimline - 24"-30" (NG); 24"-36" (LP)
BATTERY ELECTRONIC PROPANE	MVKEIKLP	\$760	IN			

INDOOR/OUTDOOR = I/O; INDOOR = IN; OUTDOOR = OUT



Price Guide effective July 7, 2025

customerservice@grandcanyongaslogs.com • (602) 344-4217 • grandcanyongaslogs.com

CONTROLS & ACCESSORIES (CONT)



ELECTRONIC IGNITION SYSTEM 200K BTU* (EIS)



WEATHER BEATER ELECTRONIC CONTROL SYSTEM (WBECS)

DESCRIPTION	MODEL#	MSRP	USE	FEATURES	OPTIONS	BURNER CAPABILITY
ELECTRONIC IGNITION SYSTEM 200K BTU*	EIS	\$1226	IN	Non-Standing Pilot; Pilot on Demand System; 24V Electronic Ignition; On/Off Operations ONLY; In-Wall Design; 6'-10" Pilot Assembly; Max Inlet 14" W.C.; Valve Temp Rating 175°; (NG) 3"-7" W.C. 200,000 BTU's; (LP) 8"-14" W.C. 320,000 BTU's	GCRK (On/Off) Remote GCWS (On/Off) Wall Switch WBPB12/24	2 Burner/Glass/Kiva – 18"-60" (NG); 18"-42" (LP) 3 Burner – 18"-42" (NG); 18"-42" (LP) Jumbo/Jumbo Slimline – 24"-60" (NG); 24"-96" (LP)
ELECTRONIC IGNITION SYSTEM PROPANE 6' PILOT 320K BTU	EIS-LP	\$1328	IN			
ELECTRONIC IGNITION SYSTEM 200K BTU 10' PILOT*	EIS-10	\$1271	IN			
ELECTRONIC IGNITION SYSTEM 320K BTU*	EIS-LP-10	\$1328	IN			
ELECTRONIC IGNITION SYSTEM NG OUTDOOR 6' PILOT 200K BTU	EIS-OUTDOOR	\$1328	OUT			
ELECTRONIC IGNITION SYSTEM 200K BTU	EIS-OUTDOOR-10	\$1328	OUT			
ELECTRONIC IGNITION SYSTEM 320K BTU USE LP	EIS-OUTDOOR-LP	\$1328	OUT			
*Indoor use only. Available in 200K, 350K & 720K option. Compatible with ALL burner, in-wall system with 6' pilot assembly lead. Valve & components mounted 12 x 12 x 4 metal enclosure. REMOTE OR WALL SWITCH CAN BE ADDED.						
350K BTU ELECTRONIC IGNITIONS 10' PILOT ASSEMBLY LEAD	EIS-INDOOR-350-10	\$1812	IN	Non-Standing Pilot; Pilot on Demand System; 24V Electronic Ignition; On/Off Operations ONLY; In-Wall Design; 6'-10" Pilot Assembly; Max Inlet 14" W.C.; Valve Temp Rating 175°; (NG) 3"-7" W.C. 350,000 BTU's; (LP) 8"-14" W.C. 560,000 BTU's	GCRK (On/Off) Remote GCWS (On/Off) Wall Switch WBPB12/24	2 Burner/Glass/Kiva – 18"-60" (NG); 18"-42" (LP) 3 Burner – 18"-42" (NG); 18"-42" (LP) Jumbo/Jumbo Slimline – 24"-120" (NG); 24"-120" (LP)
ELECTRONIC IGNITION SYSTEM 350K BTU	EIS-OUTDOOR-350	\$1700	OUT			
720K BTU ELECTRONIC IGNITION S 6' PILOT ASSEMBLY LEAD	EIS-INDOOR-720	\$2316	OUT			
WEATHER BEATER ELECTRONIC CONTROL SYSTEM	WBECS	\$2010	OUT	Hot Surface Ignition System; Pilot on Demand System; LED Diagnostics; 12V Electronic Ignition; On/Off Operations ONLY; 24" Pilot Assembly; CSA Certified Control System; Max Inlet 14" W.C.; Valve Temp Rating 175°; 265,000 BTU (NG/LP)	GCRK (On/Off) Remote WBPB12/24	All Fire-Pits; All Fire-Tables; Outdoor Burners
HIGH CAPACITY (500K BTU) WEATHER BEATER ELECTRONIC CONTROL SYSTEM	HC-WBECS	\$2326	OUT	Hot Surface Ignition System; Pilot on Demand System; LED Diagnostics; 12V Electronic Ignition; On/Off Operations ONLY; 24" Pilot Assembly; CSA Certified Control System; Max Inlet 14" W.C.; Valve Temp Rating 175°; 500,000 BTU (NG/LP)	GCRK (On/Off) Remote WBPB12/24	All Fire-Pits; All Fire-Tables; Outdoor Burners

INDOOR/OUTDOOR = I/O; INDOOR = IN; OUTDOOR = OUT



Price Guide effective July 7, 2025



SELECT YOUR VENTLESS LOG SET



VENTLESS LOGS - Ventless Systems: All logs manufactured by Grand Canyon Gas Logs are individually cast and hand painted to perfection. All logs are built with a high temperature concrete with a ceramic refractory and stainless steel fiber mesh. Logs installed indoors carry a lifetime warranty, burners carry a lifetime warranty, valves/remotes carry a 2 year warranty, and ODS carry a 1 year warranty. Indoor logs compatible with Grand Canyon Gas Log "Vulcan" Ventless Burner ONLY.

VENTLESS GAS LOG SET	MODEL#	18"	24"	30"
WEATHERED OAK (WO)	VFWO##	\$362 28#/1/7	\$426 40#/1/10	\$504 48#/1/10
RED OAK (RO)	VFRO##	\$362 28#/1/7	\$426 40#/1/10	\$504 48#/1/10
SPLIT OAK (SO)	VFSO##	\$362 28#/1/7	\$426 40#/1/10	\$504 48#/1/10
NEW ASPEN BIRCH (AB)	VFAB##	\$362 28#/1/7	\$426 40#/1/10	\$504 48#/1/10

Weight/Boxes/Log number in set



WEATHERED OAK (VFWO18)



RED OAK (VFRO24)



SPLIT OAK (VFSO30)



ASPEN BIRCH (VFAB24)

SELECT YOUR VENTLESS BURNER



VENTLESS BURNERS - Ventless Burners come factory mounted with valves, pilots, and ignition system. All Grand Canyon Series Ventless Burners are also factory tested and dual certified to the vented and ventless ANSI standards.

VENTLESS BURNERS	MODEL#	18"	24"/30"
MILLIVOLT VENTLESS BURNER	VFVUL##M(N/P)	\$1051 25#/1	\$1141 28#/1
VARIABLE VENTLESS BURNER	VFVUL##V(N/P)	\$1148 25#/1	\$1211 28#/1
VARIABLE ELECTRIC VENTLESS BURNER	VFVUL##E(N/P)	\$1409 25#/1	\$1471 28#/1

Logs Not Included

GRAND CANYON GAS LOGS: LOGS - ALL CANYON SERIES VENTLESS BURNERS COME WITH VALVES, PILOTS, AND IGNITION SYSTEM. ALL GRAND CANYON SERIES VENTLESS BURNERS ARE ALSO FACTORY TESTED AND DUAL CERTIFIED TO THE VENTED & VENTLESS ANSI STANDARDS.

FIREPLACE FLOOR SIZE FOR BURNERS WHEN CONNECTED TO GAS LINE IN FIREPLACE DIRECTLY

FIREPLACE SIZE REQUIREMENT CHART		MIN. FIREPLACE DIMENSIONS				BTU'S NATURAL GAS		BTU'S PROPANE	
BURNER SIZE	LOG SIZE	FRONT	REAR	DEPTH	HEIGHT	LOW	HIGH	LOW	HIGH
18"	18"	22"	20"	13"	18"	26K	35K	24K	32K
24"	24"	28"	20"	14"	18"	19K	37K	19K	37K
24"	30"	34"	20"	14"	18"	19K	37K	19K	37K



Price Guide effective July 7, 2025

customerservice@grandcanyongaslogs.com • (602) 344-4217 • grandcanyongaslogs.com

SELECT YOUR OUTDOOR FIRE PIT KIT



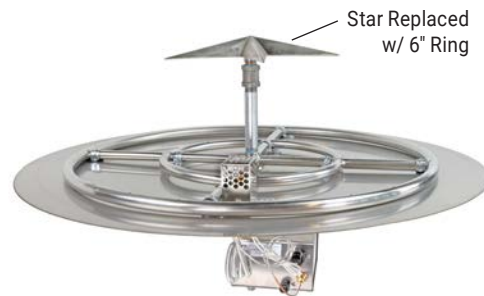
FIRE PIT STACK SETS – Outdoor Fire Pit use only, Grand Canyon Gas Logs Round Flat, Round Tall, and Tee-Pee Stack offer a plug and play solution for existing and new construction fire pits. **Choose your stack style, your gas type, controls, and finally one of 3 different log styles.** Build your own enclosure or choose one of our outdoor GFRC Fire Bowls.

ROUND FLAT STACK KITS	MODEL#	18"	24"	30"	36"	48"
ROUND FLAT STACK (RFS) NG	RFS-##-NG	\$345 00#	\$390 00#	\$473 00#	\$634 00#	\$736 00#
ROUND FLAT STACK (RFS) LP	RFS-##-LP	\$452 00#	\$555 00#	\$802 00#	\$1004 00#	\$1416 00#
ROUND FLAT STACK ELECTRONIC START (RFBECES) NG**	RFS-##-WBECES-NG	\$2502 00#	\$2605 00#	\$2852 00#	\$3126 00#	\$3466 00#
ROUND FLAT STACK ELECTRONIC START (RFBECES) LP**	RFS-##-WBECES-LP	\$2502 00#	\$2605 00#	\$2852 00#	\$3126 00#	\$3466 00#

*Includes Burner, Lava, Key Valve, and Fittings. **All Electronic Ignition Systems require 120 volts of power ran to the fire pit for valve to operate. LP models includes Stainless Steel disc and WBECES models.



ROUND FLAT STACK ELECTRONIC START (RFBECES) NG
(RFS-36-WBECES-NG)



ROUND TALL STACK ELECTRONIC START (RTWBECES) LP
(RTS-30-WBECES-LP)

ROUND TALL STACK KITS	MODEL#	18"	24"	30"	36"	48"
ROUND TALL STACK (RTS) NG	RTS-##-NG	\$438 00#	\$483 00#	\$592 00#	\$782 00#	\$881 00#
ROUND TALL STACK (RTS) LP	RTS-##-LP	\$545 00#	\$648 00#	\$870 00#	\$1194 00#	\$1560 00#
ROUND TALL STACK ELECTRONIC START (RTWBECES) NG**	RTS-##-WBECES-NG	\$2595 00#	\$2698 00#	\$2945 00#	\$3270 00#	\$3610 00#
ROUND TALL STACK ELECTRONIC START (RTWBECES) LP**	RTS-##-WBECES-LP	\$2595 00#	\$2698 00#	\$2945 00#	\$3270 00#	\$3610 00#

*Includes Burner, Torch Star, Lava, Key Valve, Fittings. **All electronic ignition systems require 120 volts of power ran to the fire pit for valve to operate. LP models includes Stainless Steel disc and WBECES models.



Price Guide effective July 7, 2025

SELECT YOUR OUTDOOR FIRE PIT KIT (CONT)



TEE-PEE STACK (TPS) (TPS-36-WBECs-NG)

TEE-PEE STACK KITS	MODEL#	24"	30"	36"	48"
TEE-PEE STACK (TPS) NG	TPS-##-NG	\$977 00#	\$1101 00#	\$1307 0#	\$1400 00#
TEE-PEE STACK (TPS) LP	TPS-##-LP	\$1142 00#	\$1431 00#	\$1746 00#	\$2086 00#
TEE-PEE STACK ELECTRONIC START (TPWBECs) NG**	TPS-##-WBECs-NG	\$3192 00#	\$3480 00#	\$3796 0#	\$4135 00#
TEE-PEE STACK ELECTRONIC START (TPWBECs) LP**	TPS-##-WBECs-LP	\$3192 00#	\$3480 00#	\$3796 00#	\$4135 00#

*Includes Burner, Lava, Key Valve, Fittings. **All electronic ignition systems require 120 volts of power ran to the fire pit for valve to operate. LP models includes Stainless Steel disc and WBECs models. SS disc included with LP and WBECs models.



ARIZONA WEATHERED OAK
9 PC LOG SET (FPAWO-18/24)



WESTERN DRIFTWOOD
9 PC LOG SET (FPWD-18/24)



ASPEN (BIRCH)
9 PC LOG SET (FPASP-18/24)

FIRE PIT LOG SETS	MODEL#	MSRP
ARIZONA WEATHERED OAK - 9 PC LOG SET	FPAWO-18/24	\$355
ARIZONA WEATHERED OAK - 16 PC LOG SET	FPAWO-30/36	\$697
ARIZONA WEATHERED OAK - 31 PC LOG SET	FPAWO-48	\$1791
WESTERN DRIFTWOOD - 9 PC LOG SET	FPWD-18/24	\$355
WESTERN DRIFTWOOD - 16 PC LOG SET	FPWD-30/36	\$697
WESTERN DRIFTWOOD - 31 PC LOG SET	FPWD-48	\$1791
ASPEN (BIRCH) - 9 PC LOG SET	FPASP-18/24	\$355
ASPEN (BIRCH) - 16 PC LOG SET	FPASP-30/36	\$697
ASPEN (BIRCH) - 31 PC LOG SET	FPASP-48	\$1791

IN DEMAND

IN DEMAND



Price Guide effective July 7, 2025

SELECT YOUR OUTDOOR FIRE PRODUCTS



OUTDOOR FIRE PIT BURNERS – 304 Stainless Steel fire feature burners are easily dropped into an existing fire pit. Outdoor Fire Pit Burners include 3-Spoke Ring Burners, reinforced H Burners, and center feed T Burners. **Add a kit to any size to include your flex line, key valve, and natural gas orifices.** Propane orifices available as well as round Stainless Steel disc plates.

OUTDOOR 304 STAINLESS STEEL BURNERS	MODEL#	6"	12"	18"	24"	30"	36"	48"	60"	72"
3-SPOKE STAINLESS STEEL RING	FRS##	\$75	\$129	\$155	\$205	\$315	\$385	\$520		
H BURNER	HBSS##		\$89	\$105	\$115	\$159	\$169	\$185	\$239	\$305
T BURNER	TBSS##						\$105	\$135	\$185	\$215
3-SPOKE STAINLESS STEEL RING KIT*	FRS##-NGK	\$229	\$279	\$299	\$349	\$469	\$529	\$669		
H BURNER KIT**	HBSS##-NGK		\$215	\$225	\$239	\$259	\$269	\$285	\$319	\$369
T BURNER KIT***	TBSS##-NGK						\$215	\$245	\$279	\$315

*Fire Ring Kit: 304 stainless steel fire ring, (NG) orifice, 36" flex line, connection fittings & 1/2" key valve (6"-24") 3/4" (30"-48")

**H Burner Kit: 304 stainless steel H burner, (NG) orifice, 36" flex line, connection fittings & 1/2" key valve

IN DEMAND

IN DEMAND

PROPANE ORIFICE FOR OUTDOOR BURNERS – \$25

OAS-LP47... 50K BTU'S | 6"-12" FIRE RING

OAS-LP41... 75K BTU'S | 18" FIRE RING | 12"-18" H BURNER

OAS-LP35... 100K BTU'S | 24" FIRE RING | 24" H BURNER | 36" T BURNER

OAS-LP31... 125K BTU'S | 30"-36" H BURNER | 48" T BURNER

OAS-LP29... 150K BTU'S | 48" H BURNER | 72" T BURNER

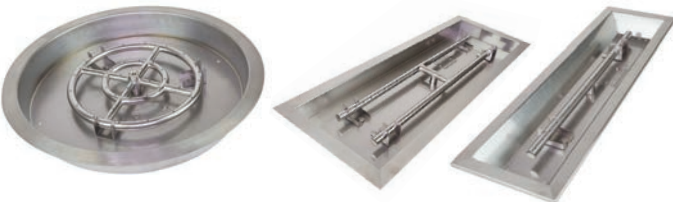
OAS-LP26... 175K BTU'S | 60" H BURNER

OAS-LP22 .. 200K BTU'S | 72" H BURNER | 72" T BURNER

OAS-LP12... 300K BTU'S | 30"-48" FIRE RING INCLUDES 3/4" CONNECTIONS

OAS-LP..... PROPANE ORIFICE

OUTDOOR ACCESSORIES



DROP-IN PANS - Round, linear, and rectangular Drop-in Pans are constructed out of 100% 304 Stainless Steel. Rectangular and Linear Pans feature folded edges with reinforcement to eliminate buckling. All pans include burners, NG/LP orifice, connection fittings, and flex line.

OUTDOOR 304 STAINLESS STEEL DROP-IN PANS	MODEL#	19"	24"	25"	30"	31"	36"	48"	60"	72"
ROUND STAINLESS STEEL DROP-IN PAN	DIP-RD-##	\$519		\$609		\$809				
RECTANGULAR STAINLESS STEEL DROP-IN PAN	DIP-REC-##		\$379		\$469		\$539	\$649		
LINEAR STAINLESS STEEL DROP-IN PAN	DIP-LN-##						\$449	\$519	\$579	\$649

STRAIGHT BALL VALVE CHROME PLATE w/3 KEY	MODEL#	MSRP
STRAIGHT BALL VALVE CHROME PLATE w/3 KEY	CP.BVS.CR.B	\$75
FITTINGS & FLEX LINE KIT - 1/2" x 16" FLEXLINE	BAK-12FFL	\$49



Price Guide effective July 7, 2025

SELECT FIRE TABLE



GFRC FIRE TABLES - Glass reinforced concrete (GFRC) fire tables are American made and designed to create a gathering or entertaining area. 18" tall table are to be hard piped in Natural Gas or Propane. Where the 24" tall tables are Propane ONLY with a LP tank access door and thermocouple safety pilot system.

- Color selection. Black (BLK); White with Black Wash (WHT); Gray with Black Wash (GRY); Rust* (RST); or Bone* (BON).

* Colors are not stocked and custom made, 4-6 week lead time order.

IN DEMAND

FIRE PIT TABLES -18" HIGH

	MODEL#	MSRP
OLYMPUS RECTANGULAR FIRE PIT TABLE - 60"L 18"H	ORECFT-603018-###-N/P	\$3831
OLYMPUS RECTANGULAR FIRE PIT TABLE - 72"L 18"H	ORECFT-723018-###-N/P	\$4469
OLYMPUS SQUARE FIRE PIT TABLE	OSQRFT-484818-###-N/P	\$3831
OLYMPUS ROUND FIRE PIT TABLE	ORNDFT-444418-###-N/P	\$3831

IN DEMAND

FIRE PIT TABLES -24" HIGH

	MODEL#	MSRP
OLYMPUS RECTANGULAR FIRE PIT TABLE - 60"L 24" H	ORECFT-603024-###-P	\$4341
OLYMPUS RECTANGULAR FIRE PIT TABLE - 72"L 24" H	ORECFT-723024-###-P	\$5489

OPTIONAL UPGRADE FIRE ROUND TABLE COVER	COVER-ORFT-4848	\$152
OPTIONAL UPGRADE FIRE SQUARE TABLE COVER	COVER-OSFT-4848	\$152
OPTIONAL UPGRADE FIRE RECTANGLE TABLE COVER	COVER-ORECFT-6030	\$152

Fire tables require 30 lbs. of glass or lava rock. Tables are made with concrete mix and colors may vary from one another.

IN DEMAND

GLASS WIND GUARDS

	MODEL#	MSRP
GLASS WIND GUARD FOR 36" LN	GWG-L36	\$269
GLASS WIND GUARD FOR 48" LN	GWG-L48	\$379
GLASS WIND GUARD FOR 19" RND	GWG-R19	\$309



Price Guide effective July 7, 2025

customerservice@grandcanyongaslogs.com • (602) 344-4217 • grandcanyongaslogs.com

SELECT FIRE BOWL



BLACK



WHITE



GRAY

GFRC FIRE BOWLS - Completely customizable: Choose your size, color, burner style (Ring or Tee-Pee), gas type, and controls. Additional options not included in MSRP are Lava Rock or 1/2" Reflective Fire Glass and 1 of 3 unique fire pit log species (Arizona Weathered Oak, Western Driftwood, and Aspen White Birch).

Glass reinforced concrete (GFRC) fire bowls are American made and designed to create a gathering or entertaining area. Choose from two sizes: 48" diameter (top) x 16" deep or 39" diameter (top) x 13" deep, comes with burner, SS disc ring, and gas orifice.

- **Color Selection.** Black (BLK); White with Black Wash (WHT); Gray with Black Wash (GRY); Rust* (RST); or Bone* (BON).

* Colors are not stocked and custom made, 4-6 weeks lead time order.

R = Ring TP = Tee Pee Burner NG = Natural Gas P = Propane

Shown with logs not included in price, logs are separate order.



FIRE BOWLS	MODEL#	MSRP
FIRE BOWL - 39" x 13" (NATURAL GAS)	FB3913-R-N-###	\$3007
*Includes 30" Fire Ring Burner, 33" SS Disc, NG Orifice, Small Install Kit & Feet (Select-Additional Cost: 90 lbs. of Glass or 50 lbs. of Lava Rock)		
FIRE BOWL - 39" x 13" (PROPANE)	FB3913-R-P-###	\$3007
*Includes 30" Fire Ring Burner, 33" SS Disc, LP Orifice, Small Install Kit & Feet (Select-Additional Cost: 90 lbs. of Glass or 50 lbs. of Lava Rock)		
FIRE BOWL - 39" x 13" (NATURAL GAS)	FB3913-TP-N-###	\$3594
*Includes 30" Tee Pee Burner, 33" SS Disc, NG Orifice, Small Install Kit & Feet (Select-Additional Cost: 90 lbs. of Glass or 50 lbs. of Lava Rock)		
FIRE BOWL - 39" x 13" (PROPANE)	FB3913-TP-P-###	\$3594
*Includes 30" Tee Pee Burner, 33" SS Disc, LP Orifice, Small Install Kit & Feet (Select-Additional Cost: 90 lbs. of Glass or 50 lbs. of Lava Rock)		
FIRE BOWL - 48" x 16" (NATURAL GAS)	FB4816-R-N-###	\$4634
*Includes 36" Fire Ring Burner, 40" SS Disc, NG Orifice, Large Install Kit & Feet (Select-Additional Cost: 190 lbs. of Glass or 70 lbs. of Lava Rock)		
FIRE BOWL - 48" x 16" (PROPANE)	FB4816-R-P-###	\$4634
*Includes 36" Fire Ring Burner, 40" SS Disc, LP Orifice, Large Install Kit & Feet (Select-Additional Cost: 190 lbs. of Glass or 70 lbs. of Lava Rock)		
FIRE BOWL - 48" x 16" (NATURAL GAS)	FB4816-TP-N-###	\$5262
*Includes 36" Tee Pee Burner, 40" SS Disc, NG Orifice, Large Install Kit & Feet (Select-Additional Cost: 190 lbs. of Glass or 70 lbs. of Lava Rock)		
FIRE BOWL - 48" x 16" (PROPANE)	FB4816-TP-P-###	\$5262
*Includes 36" Tee Pee Burner, 40" SS Disc, LP Orifice, Large Install Kit & Feet (Select-Additional Cost: 190 lbs. of Glass or 70 lbs. of Lava Rock)		
OPTIONAL COVER ROUND 39D X 13 FIRE BOWL	COVER-FB-3913	\$124
OPTIONAL COVER ROUND 48D X 16 FIRE BOWL	COVER-FB-4816	\$157



Price Guide effective July 7, 2025

KIVA SETS



AZ JUNIPER KIVA LOGS
(AJ-KIVALOGS)



AZ WEATHERED OAK KIVA LOGS
(AWO-KIVALOGS)



ASPEN KIVA LOGS
(ASPEN-KIVALOGS)



KIVA BURNER
(KIVABRN-24)



KIVA BURNER STAINLESS STEEL
(KIVABRN-24-SS)

IN DEMAND

KIVA SERIES SETS	MODEL#	MSRP	18"	24"	30"
ARIZONA WEATHERED OAK KIVA LOGS	AWO-KIVALOGS	\$272	ONE SIZE FITS ALL		
ARIZONA JUNIPER KIVA LOGS	AJ-KIVALOGS	\$272	ONE SIZE FITS ALL		
ASPEN KIVA LOGS	ASPEN-KIVA LOGS	\$331	ONE SIZE FITS ALL		
KIVA BURNER	KIVABRN-##	\$334	\$408	\$485	
KIVA BURNER STAINLESS STEEL	KIVABRN-##-SS	\$573	\$626	\$676	

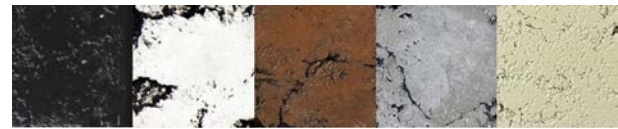
*Designed for Adobe lit Kiva fireplaces, burners size to fit Adobe Kiva fireplace.



3 TIER DISPLAY RACK
(DISPLAY RACK)



FIREGLASS
DISPLAY RACK
(GLASS RACK)



Black White Rust Gray Bone

GFRc FIRE-TABLE COLOR
DISPLAY SAMPLE (COLOR-CHIPS)

POINT OF PURCHASE MATERIAL

LOG DISPLAY RACKS

THREE TIER DISPLAY RACK	MODEL#	NET COST
-------------------------	--------	----------

3 TIER DISPLAY RACK	DISPLAY RACK	\$516
---------------------	--------------	-------

GLASS CONTAINER DISPLAY RACKS - Holds up to 90 containers, 5 shelves.

FIREGLASS DISPLAY RACK	MODEL#	NET COST
------------------------	--------	----------

FIREGLASS DISPLAY RACK	GLASS RACK	\$487
------------------------	------------	-------

GLASS COLOR CHIP DISPLAY - All seven colors available.

GLASS COLOR CHIP DISPLAY	MODEL#	NET COST
--------------------------	--------	----------

6 SECTION GLASS DISPLAY	GLASSBOX	\$8
-------------------------	----------	-----

GFRc FIRE-TABLE COLOR DISPLAY - All five colors available.

GFRc FIRE-TABLE COLOR DISPLAY SAMPLES	MODEL#	NET COST
---------------------------------------	--------	----------

COLOR SAMPLE 5 PACK GRAY, CHARCOAL BLACK, RUST, WHITE, BONE	COLOR-CHIPS	\$32
---	-------------	------

GRAND CANYON GAS LOGS SALES BROCHURES

SALES BROCHURES	MODEL#	MSRP
-----------------	--------	------

INDOOR BROCHURE 2024	23/24GCINDOOR_V1	FREE
----------------------	------------------	------

OUTDOOR BROCHURE 2024	23/24-GCOUTDOOR_V1	FREE
-----------------------	--------------------	------

BEDROCK LINEAR BURNER BROCHURE 2024	23/24-BEDSERIES_V1	FREE
-------------------------------------	--------------------	------



Price Guide effective July 7, 2025

customerservice@grandcanyongaslogs.com • (602) 344-4217 • grandcanyongaslogs.com

REPLACEMENT PARTS



PILOT ASSEMBLIES	MODEL#	USE	MSRP
18" NATURAL GAS THERMOCOUPLE PILOT ASSEMBLY	SPK-PILOT-18	Safety Pilot and Modulating Millivolt	\$81
18" PROPANE THERMOCOUPLE PILOT ASSEMBLY	SPK-PILOT-18P	Safety Pilot and Modulating Millivolt	\$81
18" MILLIVOLT PILOT ASSEMBLY NG	MV-PILOT-18	Millivolt and HC Millivolt	\$130
18" MILLIVOLT PILOT ASSEMBLY LP	MV-PILOT-18P	Millivolt and HC Millivolt	\$130
36" MILLIVOLT PILOT ASSEMBLY NG	MV-PILOT-36	Millivolt and HC Millivolt	\$148
36" MILLIVOLT PILOT ASSEMBLY LP	MV-PILOT-36P	Millivolt and HC Millivolt	\$148
120" ELECTRONIC PILOT ASSEMBLY NG	ELE-PILOT-120	EIS Indoor / Outdoor	\$253
120" ELECTRONIC PILOT ASSEMBLY LP	ELE-PILOT-120P	EIS Indoor / Outdoor	\$253
72" ELECTRONIC PILOT ASSEMBLY NG	ELE-PILOT-72	EIS Indoor / Outdoor	\$228
72" ELECTRONIC PILOT ASSEMBLY LP	ELE-PILOT-72P	EIS Indoor / Outdoor	\$228
24" PILOT ASSEMBLY FOR BATTERY ELECTRONIC	MVK-PILOT-24	Battery Electronic	\$104
24" PILOT ASSEMBLY FOR BATTERY ELECTRONIC LP	MVK-PILOT-24P	Battery Electronic	\$104
LP CONVERSION KIT ORIFICE AND AIR MIXER ASSEMBLY	LP-CONV	2BRN, 3BRN, Jumbo Jumbo Slim, GLASSBRN, and Kiva	\$54



HIGH OUTPUT MILLIVOLT (700-506)



36" MILLIVOLT PILOT ASSEMBLY NG (MV-PILOT-36)



18" Propane Thermocouple Pilot Assembly (SPK-PILOT-18P)

VALVES	MODEL#	USE	MSRP
NG->LP CONVERSION KIT	1751-016	MVQMKN / LP HCMVQMKN / LP ALL EIS	\$32
HIGH OUTPUT MILLIVOLT NATURAL GAS	700-506	HCMVQMKN / HCMVQMKNLP	\$515
STANDARD MILLIVOLT GAS VALVE NATURAL GAS	710-502	MVQMKN / MVQMKNLP	\$285
200K BTU HEATING KIT NON-LOCKOUT	712-017	EIS / EIS-OUTDOOR	\$773
350K BTU VALVE - ELECTRONIC W/O TRNSFMR, PILOT TUBE & BRNR	712-006	EIS-350 / EIS-OUTDOOR-350	\$1029
VENTED MANUAL SAFETY VALVE SKYTECH	AF-1000	MMVKN-N / LP	\$135



Price Guide effective July 7, 2025

REPLACEMENT PARTS



OUTDOOR TP BURNERS (OTPB-36)



36" THERMOPILE LEAD (1950-001)



SKYTECH VARIABLE/THERMOSTAT
REMOTE/RECEIVER (SR1001TH-1-GC)

CONTROL ASSEMBLIES	MODEL#	USE	MSRP
SPARK IGNITER ASSEMBLY 10'	1751-120	EIS W/10' PILOT	\$186
SPARK IGNITER ASSEMBLY 6'	1751-749	EIS W/6' PILOT	\$155
18" THERMOCOUPLE	1900-01H	Safety Pilot and Modulating Millivolt	\$21
36" THERMOPILE LEAD	1950-001	Millivolt and HC	\$64
24V TRANSFORMER -FOOTMOUNT FOOTMOUNT HARDWIRE	620-403	Millivolt	\$113
IGNITION MODULE (NON-LOCKOUT) IPI IGNITION (ROBERTSHAW)	780-715	ALL EIS	\$557
IGNITION MODULE (LOCKOUT) IPI IGNITION (ROBERTSHAW)	780-845	EIS-350 and EIS-720	\$668
12V TRANSFORMER WEATHER BEATER	TR-120-12	Weather Beater	\$121
VARIABLE FLAME MOTOR DRIVE FOR RCAF-1020-1 REMOTE CONTROL	AF-1000MH-L	MMVKR-NG/LP	\$108
ON/OFF/HI/LOW TRANSMITTER, RECEIVER, AND BATTERIES VENTED	RCAF-1020-1	MMVKR-NG/LP	\$169
VARIABLE/THERMOSTAT REMOTE/RECEIVER VENTLESS	SR1001TH-1-GC	Variable Ventless	\$225

OUTDOOR TP BURNER	MODEL#	24"	30"	36"	48"
OUTDOOR TP BURNERS	OTPB-##	\$815	\$938	\$1114	\$1265

STAINLESS STEEL DISCS	MODEL#	18"	24"	30"	36"	48"
STAINLESS STEEL DISCS	DISC-##	\$108	\$218	\$363	\$435	\$773



Price Guide effective July 7, 2025

GRAND CANYON GAS LOGS



WEBSITE

RPG BRANDS

MODERN FLAMES
ELECTRIC FIREPLACES

WILDFIRE
OUTDOOR LIVING

GRAND CANYON
GAS LOGS

SUMMIT
OPEN LUXURY FIREPLACES

www.GrandCanyonGasLogs.com

PHONE: 602-344-4217

customerservice@grandcanyongaslogs.com